



MADE IN THE USA 

Aluminum Bodies For All Applications



**Leading the Industry in
Innovation, Durability & Price**

(207) 660-4700 | duramagbodies.com |  



ENVIRONMENTALLY
RESPONSIBLE

Why DuraMag® Aluminum

There's a market change going on. We're excited to participate in a significant market shift in truck equipment—a continued trend away from heavy steel to durable aluminum. While part of that change is driven by higher profit opportunity at the consumer level (better gas mileage, less maintenance on rust repair and repaint, higher payloads, reduced wear and tear on your trucks, better riding trucks, etc.), there seems to be more to it than just environmental responsibility or direct operational profits.

With company trucks acting as rolling billboards, a good image has become essential as the marketplace becomes more competitive. **We build the bodies that save you money AND make you look good.**

CONTACT US

📍 977 W. River Road, #3
Waterville, Maine 04901

DuraMagBodies.com

📞 (207) 660-4700

📠 (207) 660-4280

fb.me/DuraMagTruckBodies

@duramagbodies

DuraMag®...Doing it Right

DuraMag® is a story of All Aluminum. Providing the most complete aluminum product line in the country (arguably, the most expansive truck body line period), DuraMag® has forced a stagnant, old-school industry to attempt to modernize. Steel bodies are forced to be underbuilt if they're going to allow any payload at all with today's low GVW trucks. While a DuraMag® body is far lighter (40-50%) than a steel body, our focus is not on building the lightest body. In fact, we acknowledge that our aluminum bodies generally weigh more than competitors' aluminum bodies. Our goal is to build bodies that will never let you down—and yes, they're sometimes overbuilt. After 30 years in aluminum design, DuraMag® has a huge advantage over steel manufacturers trying to compete with our products. We're confident that you're in the best hands when you join the DuraMag® team. For decades, we've focused on one thing and we're **Doing it Right: Aluminum.**

Why Your Next Body Should be an Aluminum DuraMag®

HERE ARE THE FACTS:

1. Advanced design for superior durability and function
2. Shortest industry "lead times"
3. Pricing that's similar to vastly inferior steel bodies
4. Most rugged understructure in the industry
5. BEST warranty in the industry—5-10 years based on product
6. Weight savings—Up to 50% lighter than steel
7. Fuel savings of 10% or more
8. Generally stronger than steel with 6000 series high-strength aluminum
9. No rusting
10. Reduced wear and tear on the truck from hauling a lighter aluminum body
11. Green recycled aluminum / Environmentally responsible
12. Outlasts truck—Frequently moved to a second vehicle
13. Increased payload—Your GVW isn't consumed with a heavy steel body
14. Superior company image with a first-class truck and body

Our Customers love our products.

Filtering through the noise of what's a sales pitch and what's real is sometimes difficult. If you're still undecided on what manufacturer to go with, we'd suggest this: Ask anyone that owns a DuraMag body what brand to buy. Follow their advice.

"I have purchased multiple dry van bodies. The attention to detail is amazing! It's built like a tank and priced perfectly. When you need a new dump or dry van body, make DuraMag® your first choice."

—JUSTIN JARVIS

What’s Inside

DuraMag® Service Bodies 6

 S-Series: Traditional Swing Doors 6

 R-Series: Premium Roll-Up Doors 7

DuraMag® Canopy..... 12

DuraMag® Flatbed Bodies..... 14

 Pickup Deletes & Cab Chassis..... 14

 HD Flatbed Bodies..... 16

 Anti-Rattle Rack Bodies..... 17

DuraMag® Landscape Bodies 20

 Smooth Side Landscape 21

 Extruded Side Landscape..... 21

 Chipper Top 21

DuraMag® Dump Bodies 23

 2-5 Yard Dump..... 23

 5-7 Yard Dump..... 23

DuraMag® Van Bodies 25

 DuraMag® Series Van Bodies..... 25

 DuraLite Series Van Bodies..... 26

About DuraMag® 30

S-Series: Traditional Swing Doors

The DuraMag® Service Body is designed for continuous hard work with full length, heavy duty, long sills. What separates this body from the competition is the understructure; the difference is stunning. The general body construction is fully welded—never riveted or screwed together. Our proprietary door extrusions, coupled with compression latches and automotive bulb seals, produce the most watertight compartments available. The black polymer door latches are rivet-less for additional protection. All vertical compartments incorporate nitrogen struts to optimize performance in cold environments.

All DuraMag® bodies are fully sandblasted and powder coated. There are faster methods of aluminum surface prep, but none that create the bond of sandblasting. All lights are factory wired and installed.

NEW Swing Door Locking System

The DuraMag® **MAGLOC** (*patent pending*) is an optional, proprietary locking system that allows you to lock and unlock all the swing doors with a single key fob button. We also offer the all the traditional locking methods from door-by-door to the traditional rod locking system that secures all the doors on a side - with an external padlock.

DuraMag® service bodies are 6” longer than the competition (competitors’ are too short). This is reflected in our increased rear box size.

STANDARD FEATURES

- All Aluminum (6000 Series) Understructure with Extruded Box Tube Construction
- Heavy Slam Latch Tailgate with Stainless Steel Lock Rods
- Swing Doors with Nitrogen Props on Vertical Compartments
- Extreme Duty (6000 Series) .625 Interlocking Extruded Aluminum Floor
- Fully Welded Construction—No Rivets, Screws, or Bolts to Come Loose
- Welded Fender Flares for Superior Strength and Rigidity
- Black Polymer Rivetless Door Handles
- Sandblasted Metal Preparation (not inferior wash/zinc phosphate)
- Powder Coated—Standard: White
Optional colors available:
 - Black
 - Red: GM/Dodge Red and Ford Red
- LED Marker Lights (where required)
- LED Penny Light in Each Compartment
- LED Ultra-thin 6” Round Stop/Turn/Tail/Backup body lights
- Inner Bed Walls and Exterior Top of Compartments—1/8” Diamond Plate
- Continuous Aluminum Piano Door Hinge
- Adjustable Shelving in Front, Middle, and Rear Compartments (one shelf with dividers in each compartment)
- Pass through Panel between Front & Center Compartments
- Tread Plate Splash Guards on Front Wall—ALL Models
- Strongest Built Aluminum Service Body in the Industry
- BEST 10 YEAR WARRANTY in the Industry



Shown with optional Magnum Service Body Rack and Lighted Bumper

The Strongest, Most Engineered Service Body - Ever

R-Series: Premium Roll-Up Doors

Designed Around Safety: The DuraMag® R-Series has all the same features as the S-Series but replaces the swing doors with roll-up/shutter style doors. These are premium, anodized aluminum doors that are customarily seen on high-end fire vehicles. Roll-up doors allow the user to work in a safer position without walking around swing-out doors extended into the street or walkway—no carrying tools out and around swinging doors. Optional Key fob Locking system available.

All DuraMag® bodies are fully sandblasted and powder coated. There are faster methods of aluminum surface prep, but none that create the bond of sandblasting. All lights are factory wired and installed.

DuraMag® service bodies are 6” longer than the competition (competitors’ are too short). This is reflected in our increased rear box size.

STANDARD FEATURES

- All Aluminum (6000 Series) Understructure with Extruded Box Tube Construction
- Heavy Slam Latch Tailgate with Stainless Steel Lock Rods
- Extreme Duty (6000 Series) .625 Interlocking Extruded Aluminum Floor
- Fully Welded Construction—No Rivets, Screws, or Bolts to Come Loose
- Welded Fender Flares for Superior Strength and Rigidity
- Premium Roll-up Safety Designed Doors
- Sand-blasted Metal Preparation (not inferior wash/zinc phosphate)
- Powder Coated—Standard: White
Optional colors available:
 - Black
 - Red: GM/Dodge Red and Ford Red
- LED Marker Lights (where required)
- LED Penny Light in Each Compartment
- LED Ultra-thin 6” Round Stop/Turn/Tail/Backup body lights
- Inner Bed Walls and Exterior Top of Compartments—1/8” Diamond Plate
- Adjustable Shelving in Front, Middle, and Rear Compartments (one shelf with dividers in each compartment)
- Pass through Panel between Front & Center Compartments
- Tread Plate Splash Guards on Front Wall—ALL Models
- Strongest Built Aluminum Service Body in the Industry
- BEST 10 YEAR WARRANTY in the Industry



Shown with Optional Cantilever Rack and Lighted Bumper



MAGLOC Keyless Locking System



Premium Roll Up Doors



Magnum Rack with Optional Lights



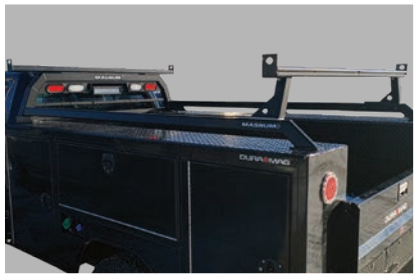
Electric Lock for Roll-up Doors



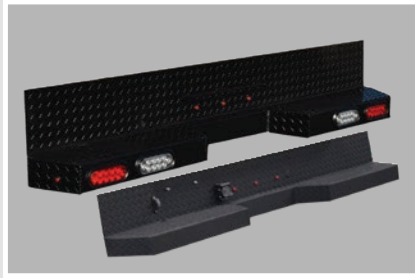
Flip Top Compartments



Production Showing Inside of Raised Gas Compartment



Magnum Rack, Rail Kit & Rear Rack



Bumpers - Lighted & Non-lighted



DuraMag® Receiver Hitch with Integrated Shear Plate



Roll-up Tonneau Covers



Lighted Compartments



Transverse Compartments



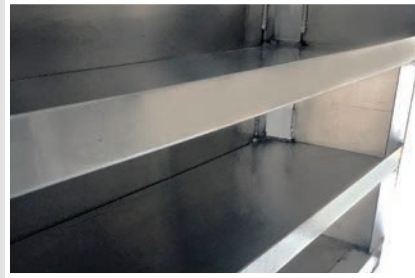
Standard Canopy



Tapered Side Canopy



Heavy-duty Cantilever Racks



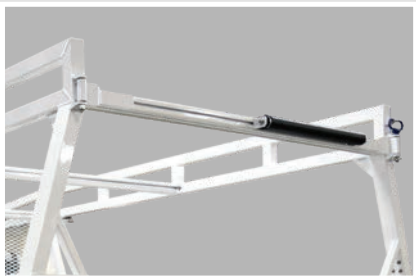
Additional Shelving in Canopy



Mesh Baskets
(shown with optional red powder coat)



Pipe Holder



Accessory Glide Track
(Lights, Ladder Rollers, etc.)



Ladder Racks



Lift Gates



Slide-out Tool Boxes



Wheel Chocks/holders



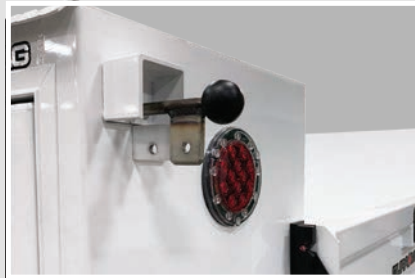
E-Track



Spare Tire Retainer



Telescopic Sliding Roofs



Traditional Rod Lock System



Spray-on Bed Liner

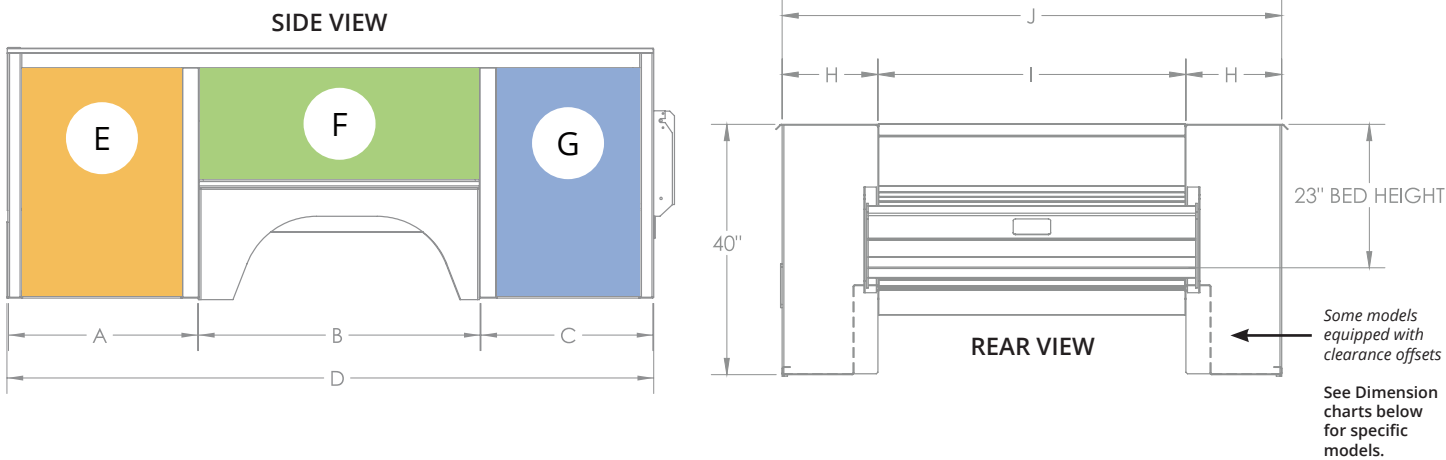


4k SS Recessed D-Ring



Strobe Lights

SERVICE BODY DIMENSIONS



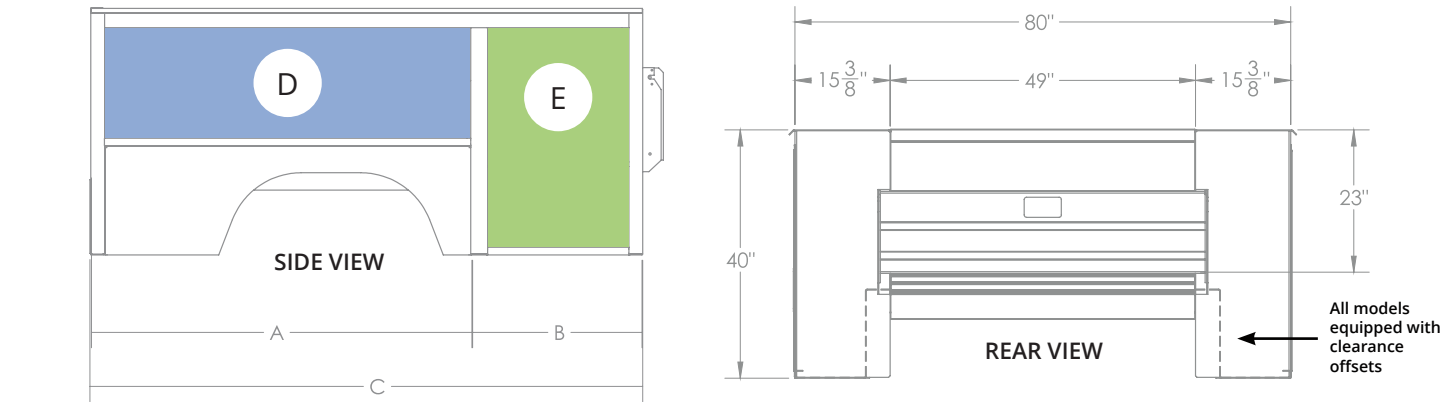
Pickup Delete – Truck Specific Fit

Single Rear Wheel – 8.5'

Model	DuraMag Aluminum Weight (lbs)	Competition Steel Weight (lbs)	% Lighter Than Steel	Cab to Axle	A	B	C	D	Compartment Door Frame Opening Clearance			H	I	J
									E	F	G			
SB-S-56-STD-SRW**	811	1,111	37%	56"	28-3/4"	43-1/2"	26"	104"	22-15/16" x 32-15/16"	42-3/16" x 15-3/16"	20-3/16" x 32-15/16"	15-1/2"	49"	80"
SB-R-56-STD-SRW**	811	1,111	37%	56"	28-3/4"	43-1/2"	26"	104"	23-15/16" x 32-3/4"	43-3/16" x 15"	21-3/16" x 32-3/4"	15-1/2"	49"	80"

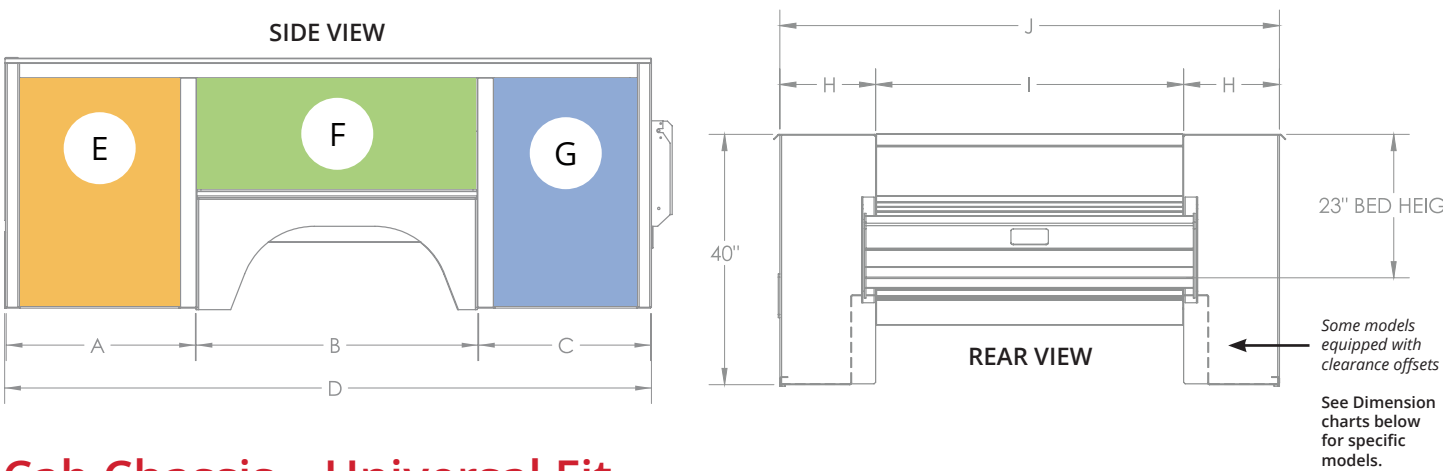
Dual Rear Wheel – 8.5'

Model	DuraMag Aluminum Weight (lbs)	Competition Steel Weight (lbs)	% Lighter Than Steel	Cab to Axle	A	B	C	D	Compartment Door Frame Opening Clearance			H	I	J
									E	F	G			
SB-S-56-STD-DRW	895	1,288	43%	56"	28-3/4"	43-1/2"	26"	104"	22-15/16" x 32-15/16"	42-3/16" x 15 3/16"	20-3/16" x 32-15/16"	20"	54"	94"
SB-R-56-STD-DRW	895	1,288	43%	56"	28-3/4"	43-1/2"	26"	104"	23-15/16" x 32-3/4"	43-3/16" x 15"	21-3/16" x 32-3/4"	20"	54"	94"



Shortbed – 7'

Model	DuraMag Aluminum Weight (lbs)	Competition Steel Weight (lbs)	% Lighter Than Steel	Cab to Axle	A	B	C	Compartment Door Frame Opening Clearance	
								D	E
SB-S-36D-STD-SRW	582	874	33%	36"	53-3/16"	27-9/16"	81-1/4"	48-1/16" x 15-3/16"	20-3/16" x 32-15/16"
SB-R-36D-STD-SRW	582	874	33%	36"	53-3/16"	27-9/16"	81-1/4"	49-1/16" x 15"	21-3/16" x 32-3/4"
SB-S-40F-STD-SRW	665	964	31%	40"	61-15/16"	27-9/16"	90"	56-11/16" x 15-3/16"	20-3/16" x 32-15/16"
SB-R-40F-STD-SRW	665	964	31%	40"	61-15/16"	27-9/16"	90"	57-11/16" x 15"	21-3/16" x 32-3/4"
SB-S-42G-STD-SRW	670	1,009	34%	42"	61-15/16"	27-9/16"	90"	56-11/16" x 15-3/16"	20-3/16" x 32-15/16"
SB-R-42G-STD-SRW	670	1,009	34%	42"	61-15/16"	27-9/16"	90"	57-11/16" x 15"	21-3/16" x 32-3/4"



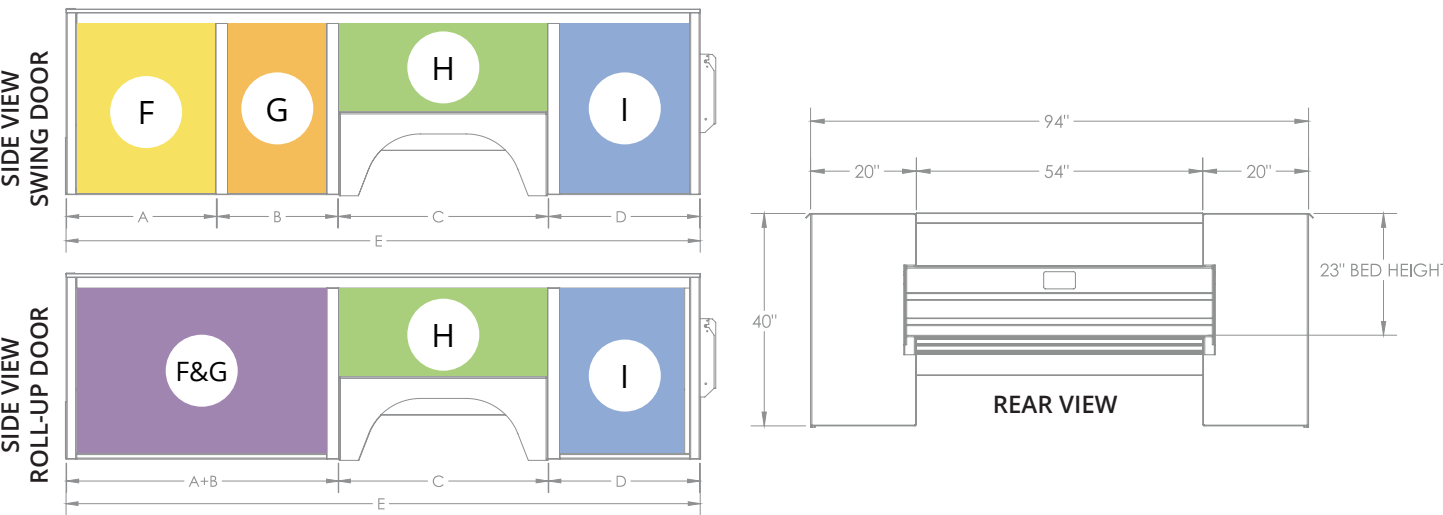
Cab Chassis – Universal Fit

Single Rear Wheel – 9'

Model	DuraMag Aluminum Weight (lbs)	Competition Steel Weight (lbs)	% Lighter Than Steel	Cab to Axle	A	B	C	D	Compartment Door Frame Opening Clearance			H	I	J
									E	F	G			
SB-S-60-STD-SRW**	820	1,238	51%	60"	33"	43-1/2"	31"	113"	27-3/16" x 32-15/16"	42-3/16" x 15-3/16"	25-3/16" x 32-15/16"	15-1/2"	49"	80"
SB-R-60-STD-SRW**	820	1,238	51%	60"	33"	43-1/2"	31"	113"	28-3/16" x 32-3/4"	43-3/16" x 15"	26-3/16" x 32-3/4"	15-1/2"	49"	80"

Dual Rear Wheel – 9'

Model	DuraMag Aluminum Weight (lbs)	Competition Steel Weight (lbs)	% Lighter Than Steel	Cab to Axle	A	B	C	D	Compartment Door Frame Opening Clearance			H	I	J
									E	F	G			
SB-S-60-STD-DRW	912	1,399	53%	60"	33"	43-1/2"	31"	113"	27-3/16" x 32-15/16"	42-3/16" x 15-3/16"	25-3/16" x 32-15/16"	20"	54"	94"
SB-R-60-STD-DRW	912	1,399	53%	60"	33"	43-1/2"	31"	113"	28-3/16" x 32-3/4"	43-3/16" x 15"	26-3/16" x 32-3/4"	20"	54"	94"



Dual Rear Wheel – 11'

Model	DuraMag Aluminum Weight (lbs)	Competition Steel Weight (lbs)	% Lighter Than Steel	Cab to Axle	A	B	C	D	E	Compartment Door Frame Opening Clearance			
										F	G	H	I
SB-S-84-STD-DRW	1,124	1,704	52%	84"	30-3/4"	24-1/2"	43-1/2"	31"	137"	27-3/16" x 32-15/16"	18-7/16" x 32-15/16"	42-3/16" x 15-3/16"	25-7/16" x 32-15/16"
SB-R-84-STD-DRW	1,120	1,704	52%	84"	57"		43-1/2"	31"	137"	F & G		43-3/16" x 15"	26-7/16" x 32-3/4"

DuraMag® Canopy

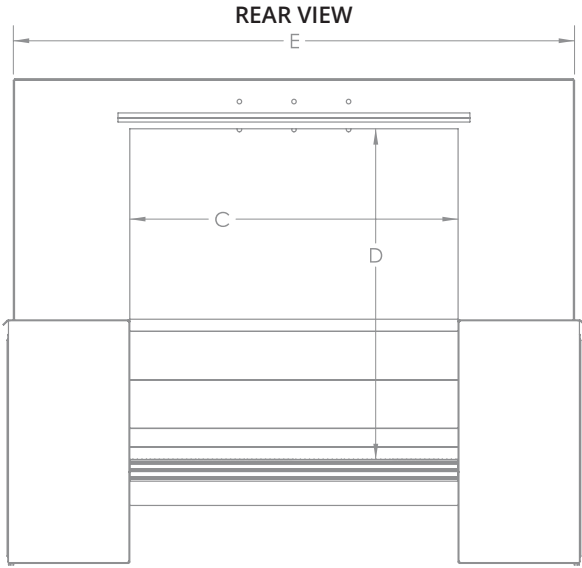
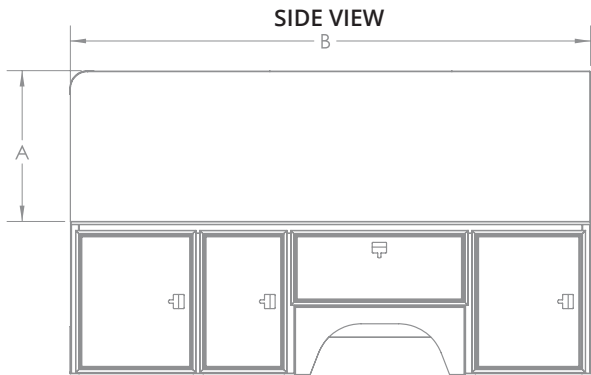
The DuraMag® Canopy is an option that's added to the base service body during production. The Canopy Body creates the ultimate enclosed mobile workstation. Securely transport your tools from job to job. Bad weather? Work inside!

STANDARD FEATURES

- Enclosed Service Body that is Full Width
- Single Shelf per side (located 19" from compartment tops)
- Rear Barn Doors (includes Barn Door Tie Backs)
- LED Dome Light with Switch
- Standard Heights: 53" (51" Interior Clearance), 63" (61" Interior Clearance), and 74" (72" Interior Clearance)



Standard 53" Canopy



Canopy Enclosures

Note: All Weights Calculated with Canopy Standard Features Include Rear Barn Door and Standard Interior Shelving (one shelf per side).

Model	Canopy Height*	Interior Clearance	DuraMag Aluminum Weight (lbs.)					A	B (Equal Service Body Length)	C		D	E	
			56 Cab to Axle		60 Cab to Axle		84 Cab to Axle							
			SRW	DRW	SRW	DRW				SRW	DRW			
53CANOPY	53"	51"	429	484	464	518	615	29-3/4"	104-137"	49"	54"	44-1/2"	78-3/8"	92-1/2"
63CANOPY	63"	61"	526	581	527	586	685	39-3/4"	104-137"			54-1/2"		
74CANOPY	74"	72"	619	678	600	662	772	50-3/4"	104-137"			65-1/2"		

*Canopy Height is measured from floor of service body bed to the top of canopy roof



Shown with Optional
Racks, Steps, Handles,
and Tail Lights

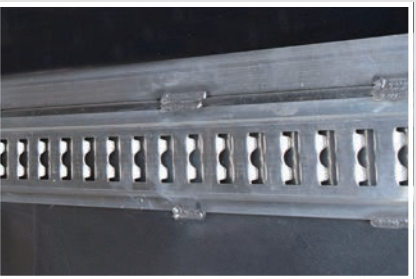
All specifications subject to change without notice.



Roll-up Rear Door



Canopy Steps



E-Track



Lift Gate with Canopy Service Body



HD Ladder Racks
(Equipped with Accessory Glide Track)



Tapered Side Canopy



Additional Shelving



Strobe Lights



Full Rear Ladder



Canopy Side Doors



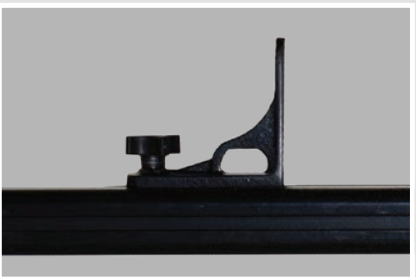
Cantilever Rack



Pipe Door



Grab Handle



Cargo Stops for Accessory Glide Track



D-Rings for Accessory Glide Track

Economical Flexibility

The DuraMag® Flatbed has ultimate flexibility.

You can add: Hoists for dumping, rack sides to restrain cargo, sideboards to fully enclose the sides and back, tarps, tool boxes (underbody and topside), D-rings for securing cargo, rear diamond plate aprons to dress it up a bit or additional headboard lights and strobes. The possibilities are limitless—and they all start with an economical base body that will outlast your truck.

Just need a basic replacement bed? The DuraMag® pickup delete is a favorite replacement body for rusted or damaged pickup beds. Great looks and function at an affordable price.

What Makes DuraMag® Stand Out in a Crowded Flatbed Market?
Three words: Experience, Performance & Value

Experience: DuraMag® only builds aluminum bodies. We don't build a few aluminum bodies as a secondary line. We've been building this body for over a decade, building thousands of Flatbeds a year: A proven design.

Performance - How a DuraMag® Aluminum Body Outperforms Steel:

1. Super strong with lighter weight

2. Higher payload capacity

3. Lower fuel consumption

4. Less chassis wear and tear

5. A better ride
6. No rust

7. More environmentally-friendly manufacturing process



Shown with Optional Lighted Headboard

Attention to Detail: DuraMag® beds are designed with an LED light wire harness that uses heat shrink butt connectors. All lights are rubber mounted in box tube extrusion, protecting from corrosion and damage. These details might seem small, but you'll really appreciate them when your lights are trouble free.

Distinction: Unlike most of our competition, DuraMag® wiring is fully concealed inside of box tubing with nothing exposed to the weather. This is a significant consideration as "wiring exposed to the elements" is right behind "rust" in important considerations to minimize future problems.

Value

Truck Resale Value: Your DuraMag® bed not only saves you money along the way, it generally increases the value of your truck at time of sale. Rusted bodies are a liability.

Value: DuraMag® beds are competitive with, and in many cases, no more expensive than steel beds. For all the value added—and for all the cost and risk associated with the Steel option, it makes the decision easy.

Best Warranty: Great value that's backed up with the best warranty in the industry. Visit our website at Duramagbodies.com for full details or to locate a dealer near you.



STANDARD FEATURES

- All Aluminum (6000 Series) Box Tube Construction
- Heavy 2" x 3" Long Sills (6000 Series)
- 24" OC Cross Members 2" x 3" (6000 Series)
- Premium G-tube Perimeter Frame (6000 Series)
- Extruded Aluminum Flooring - (Tongue and Groove - 6000 Series)
- Extruded Aluminum Headboard with Glide Track for easy on/off Accessories
- LED Lights Fully Pre-wired Inside Box Tube
- Stake Pockets & Rub Rail (Both Side & Rear)

CALL US

DuraMag® beds can be fully customized.

If you have questions, concerns, or want to explore options, feel free to call the factory directly (207-660-4700). Our hours are 8am-5pm M-F, EST.

Pickup Delete

Model*	Deck (W x L)	DuraMag Aluminum Weight (lbs)	Competition Steel Weight (lbs)	% Lighter Than Steel
TB08407	81" x 84"	328	489	33%
TB08485	81" x 102"	350	594	41%
TB09785	92" x 102"	398	674	41%
TB10185	97" x 102"	419	711	41%
TB10107	97" x 84"	392	586	33%

* Some model dimensions may differ slightly dependent on year/make/model of truck. Visit <https://www.duramagbodies.com> for specific model number that applies to your truck.

Cab Chassis

Model*	Deck (W x L)	DuraMag Aluminum Weight (lbs)	Competition Steel Weight (lbs)	% Lighter Than Steel
TB08495	81" x 114"	372	709	48%
TB09795	92" x 114"	422	802	47%
TB10195	97" x 114"	445	855	48%
TB09711	92" x 132"	489	912	46%
TB10111	97" x 132"	516	1,012	49%
TB09712	92" x 144"	534	1,024	48%
TB10112	97" x 144"	563	1,072	47%

All specifications subject to change without notice.

HD Flatbed Bodies

A Work-Horse Favorite with Fleets

The DuraMag® HD Series is strong enough to handle anything the truck is rated for and can be built to maximize your workday efficiency, with a straight truck or a dumping flatbed.

Designed for larger Class Trucks and Heavy Loads, the HD Series is now the best solution for lower GVW vehicles. These vehicles require aluminum bodies, as steel either consumes too much of the GVW or they're forced to be underbuilt to allow minimal payload.

STANDARD FEATURES

- All Aluminum 6000 Series
- Extruded Box Tubing
- Heavy Duty Long Sills and Rear Light Bar 2" x 5" 6000 Series
- Cross Members 12" OC 2" x 3" 6000 Series
- Premium G-Tube Perimeter Frame 6000 Series Aluminum
- Heavy Duty 1/2" Rub Rail & Stake Pockets (both side & rear)
- Heavy Rub Rail Reinforcement (between stake pockets)
- LED Lights Fully Pre-wired Inside Box Tube
- Extruded aluminum flooring 6000 Series (Tongue and Groove)
- Heavy Duty Extruded Aluminum Headboard with "below floor" gusset
- Choice of 16"x 32" expanded metal window OR headboard cross bars

Model*	Deck (W x L)	DuraMag Aluminum Weight (lbs)	Competition Steel Weight (lbs)	% Lighter Than Steel
TB09510HD	95" x 124"	559	1,160	52%
TB09512HD	95" x 148"	653	1,395	53%
TB09514HD	95" x 172"	745	1,620	54%
TB09516HD	95" x 196"	838	1,850	55%
TB09518HD	95" x 220"	931	2,040	54%
TB09520HD	95" x 244"	1,025	2,235	54%
TB09522HD	95" x 268"	1,118	2,640	58%
TB09524HD	95" x 292"	1,211	2,690	55%

*Visit <https://www.duramagbodies.com> for specific model number that applies to your truck



Anti-Rattle Rack Bodies

The DuraMag® All-Aluminum Anti-Rattle Stake Body adds Flexibility to your Fleet.

Within minutes, your stake body becomes a flatbed for those loads where rack sides are inconvenient. Hauling loose material that might go through the boards on the side? Check out our ventilated Flex Rack option.

We know how annoying a rattling stake body can be. So we created a stake body that is virtually silent with the use of vibration reduction rubber grommets and high-density polyethylene anti-chafe plates. DuraMag's proprietary "spring loaded lever system" assures that your rack posts always stay tight and in position so they don't rattle.

Whatever your industry, the DuraMag Anti-Rattle Stake Body will outperform competitive options. Period.

Easy to Remove

DuraMag® rack sides are all built in sections that one person can easily lift off and on. The sections are joined together with stainless steel spring pins. Unpin, squeeze the spring-loaded lever, and lift the rack section out. To see how easy it is, watch the video on our website at <https://duramagbodies.com/anti-rattle-stake-truck-body>.

STANDARD FEATURES

- Square Headboard with Expanded Metal Window
- All Aluminum Rack Sections with Stainless Steel Locking Spring Pin
- Anti-Rattle HDPE Shims with Stainless Rivets on all Stakes
- Proprietary Spring-loaded Release Lever—No Fail
- HDPE Body Blocks that Protect Against Rack Abrasion
- Anti-Rattle Rubber Bumpers
- HD Version includes 1" x 1" Perimeter Tube Frame around all Rack Sections
- Available on any body where stake body sides apply





30" or 40" Rack Body System



Flex Rack System



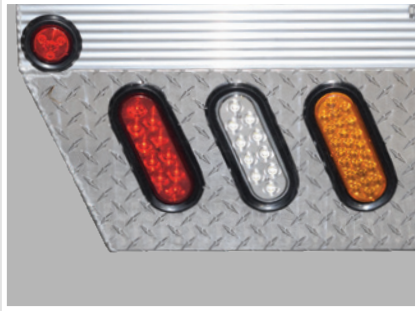
Hoists on Flatbeds



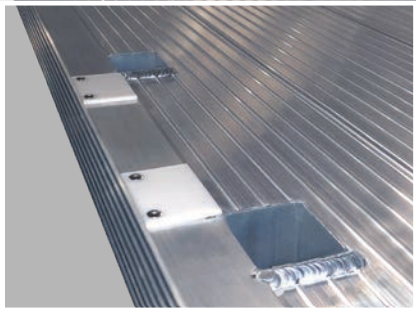
16" Removable Sideboards
(Shown with Optional Black Powder
Coat and Strobe Lights)



Cantilever Rack with PT Flooring



6" Oval Stop/Tail/Turn,
Backup & Strobe Light



Inboard Stake Pockets



Lighted Headboard



Powder Coating Color Options



Cantilever Rack with Aluminum Floor



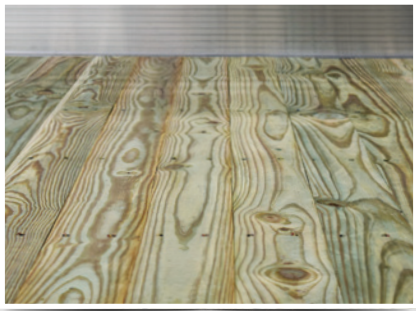
Cast Aluminum License Plate Holder



Rubber Flooring (Rubber Composite)



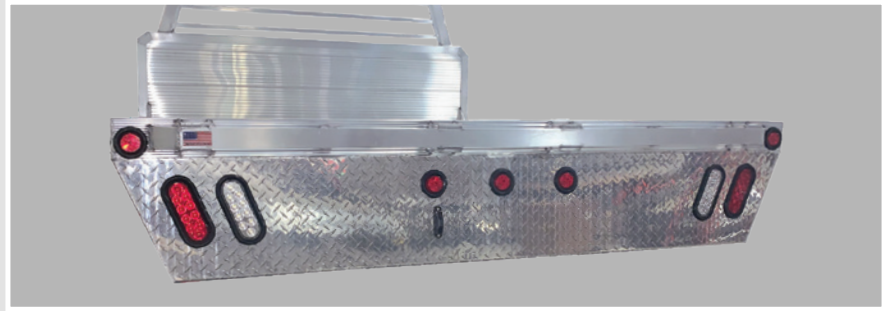
4k SS Recessed D-Ring



PT Flooring



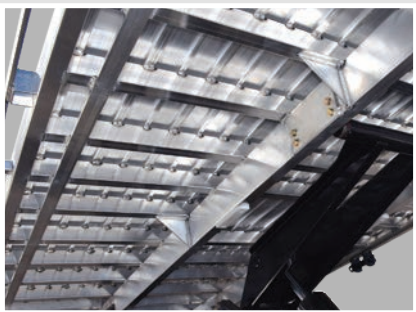
Extruded Aluminum Tarp Cover



Diamond Plate Rear Apron



Toolboxes: Underbody and Topside



HD Sub Structure



Under Body Tie Rail

"Incredible operation, amazing quality products, a pleasure to do business with. We have been using DuraMag® truck bodies for several years. They have the highest quality standards and take pride in their operation. We will continue to do business with DuraMag® for years to come."

—KEN SCHULTZ, OWNER, NIAGARA TRUCK EQUIPMENT

DuraMag® Landscape Bodies

Built to Perfection

DuraMag® Landscape Bodies are ALL Aluminum box tube construction. The standard 42” headboard has a 16” x 30” expanded metal window. Heavy duty 2” x 6” long sills and 2” x 3” cross members - all 12” on center. The Duramag® Landscape Bodies are all built with proprietary aluminum flooring that’s far stronger than typical steel floors.

In short: Highly-engineered and overbuilt so your only limitation is the truck’s GVW, not the body.

The frame comes hoist ready as a standard feature. Solid welded sides are standard with 3” x 3” x .250” welded rear corner posts. Swinging barn doors are equipped with polished stainless steel locking bars and aluminum door tie backs.

Smooth Side or Extruded?

The difference between a smooth side and extruded body is only the wall material. There is no functional difference. The decision is a matter of personal preference.

Rolling Billboard

The ultimate, clean, professional appearance. Advertise for free as you move about town. DuraMag’s optional “Double Wall” provides a smooth, bonded (rivetless) surface for easy graphics application on the side of the body. This .040” painted sheet is generally white, but is also available in select colors - not color matched to vehicles. This exterior sheet is the industry standard for Van Bodies.

Removable Sides

Turn your Landscape body into a flat bed. Great for plowing snow (visibility and sander in the back) or jobs where side loading is required.

The changeover is easy: DuraMag’s removable sides and rear are secured with stainless steel bolts. The tie rail is relocated to under body.

The Removable Sides option is an Ideal Work Truck Solution for four season use.

Chipper Top or Leaf Top

Convert your Landscape body into a chipper top. Easily bolts on for seasonal use. Add a door and you have a leaf top!

- No more chip or leaf containment issues.
- No more wasted time cleaning up around the truck from trying to load more than it holds.

Smooth Side

Model*	Overall Dimensions	Side Height	DuraMag Aluminum Weight (lbs)
LS0848542SS	81” x 102”	42”	844
LS0969542SS	96” x 114”	42”	943
LS0961242SS	96” x 144”	42”	1,191
LS0961442SS	96” x 168”	42”	1,390
LS0969548SS	96” x 114”	48”	991
LS0961248SS	96” x 144”	48”	1,252
LS0961448SS	96” x 168”	48”	1,461
LS0961648SS	96” x 192”	48”	1,669

Extruded Side

Model*	Overall Dimensions	Side Height	DuraMag Aluminum Weight (lbs)
LS0848542E	81” x 102”	42”	886
LS0959542E	96” x 114”	42”	990
LS0951242E	96” x 144”	42”	1,251
LS0951442E	96” x 168”	42”	1,459
LS0959550E	96” x 114”	50”	1,175
LS0951250E	96” x 144”	50”	1,484
LS0951450E	96” x 168”	50”	1,732
LS0961650E	96” x 192”	50”	1,979

All specifications subject to change without notice.

Smooth Side Landscape STANDARD FEATURES

- All Aluminum 6000 Series Box Tube Construction
- Heavy Duty Long Sills & Light Bar - 2” x 6” x .250”
- Cross Members at 12” OC - 2” x 3” x 1/8”
- Premium B-Tube Perimeter Frame 6000 series
- Proprietary Extruded Aluminum Flooring
- Heavy Duty Rear Corner Posts 3” x 3” 6000 Series Aluminum
- Barn Doors with Polished Stainless Steel Locking Bar
- Flat Bar Tie Rail 2” x 1/4”
- Removable Spreader Bar
- LED Lights Fully Pre-wired Inside Box Tube
- Aluminum Sheet Headboard (.125”) with Expanded Metal Window
- Aluminum Sheet Sides .125” 5000 series



Shown with Optional Rear Strobe Lights and Underbody Toolboxes

Extruded Side Landscape STANDARD FEATURES

- All Aluminum 6000 Series Box Tube Construction
- Heavy Duty Long Sills & Light Bar - 2” x 6” x .250”
- Cross Members at 12” OC - 2” x 3” x 1/8”
- Premium B-Tube Perimeter Frame 6000 series
- Proprietary Extruded Aluminum Flooring
- Extruded Aluminum Headboard with Expanded Metal Window
- Solid Extruded Sides with Dirt Shedding Extrusion
- Heavy Duty Rear Corner Posts 3” x 3” 6000 Series Aluminum
- Barn Doors with Polished Stainless Steel Locking Bar
- Flat Bar Tie Rail 2” x 1/4”
- Removable Spreader Bar
- LED Lights Fully Pre-wired Inside Box Tube

Chipper Top STANDARD FEATURES

- All Aluminum Construction
- Bolts to Top Rail of Landscape Body
- Extruded Aluminum Frame
- Smooth Side 1/8” Mill Finish Sides
- Heavy Duty 3/16” Front Wall Sheet
- Punched Ventilation in Roof
- Optional Back 4’ of Roof in Expanded Metal (Order at no charge)
- Lifting Hooks (4)



Shown with Optional Rear Strobe Lights and Underbody Toolboxes



52" Side Door



Two Way Dumping Tailgate



Chipper Top



Champion Hoist Installed



Cab Shields: 12", 24", 36", 42"



Double Wall (Graphics) Upgrade



Chipper Box



Manual Tarp



Powder Coating Color Options



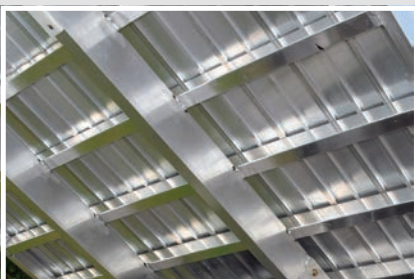
Electric Tarp Option



Full Side Ladder



Under Body Tool Box
(Diamond Plate or Smooth)



Standard Understructure
Cross Members 12" OC



Fold-Up 2 Step Ladder



Removable Sides



Strobes



4k SS Recessed D-Ring

DuraMag® Dump Bodies

Built Value Tough

High Performance In Commercial Use

DuraMag® Aluminum dump bodies are recognized as **Best in Class**: Stronger than your typical steel dump body with all the benefits of Aluminum: NO RUST, eco-friendly, increased payload, better ride, approximately 10% fuel savings.

Watch the Durability Video at <https://DuraMagBodies.com/truck-dump-bodies/>!

Available soon for 2-5 Yard Dumps:

Electronic Tailgate Lock Release Switch in cab. No Need to get out of the truck to unlock your tailgate!



Shown with Optional Electric Tarp

2-5 Yard Dump STANDARD FEATURES

- All Aluminum Construction
- Super Heavy Duty 2" x 6" x 1/4" Long Sills
- Extruded 3/16" Proprietary Unibody Floor with 2" OC Bracing
- Double Walled (1/8" Outside, 3/16" Inside) Aluminum Walls for Superior Strength & Appearance
- Stainless Tailgate Actuator Hardware & Fasteners
- LED Lights Fully Pre-wired Inside Box Tube
- OEM Plug & Play Wiring Harnesses *(Adaptors sold separately)
- Standard 17" Aluminum Cab Shield with Punched Window

5-7 Yard Dump STANDARD FEATURES

- All Aluminum Construction
- Super Heavy Duty 2" x 8" x 1/4" Long Sills
- Extruded 3/16" Proprietary Uni-body Floor with 1.69" OC Bracing
- Double Walled (3/16" Outside, 3/16" Inside) Aluminum Walls for Superior Strength & Appearance
- Stainless Tailgate Actuator Hardware & Fasteners
- LED Lights Fully Pre-wired Inside Box Tube
- OEM Plug & Play Wiring Harnesses*(Adaptors sold separately)
- Cab Shield (Truck Specific)

No Rust • Best Value
Great Appearance



Industry Leading 5 Year
Limited Warranty

2-5 Yard Dump Body

Model	DuraMag Aluminum Weight (lbs)	Overall (W x L)	Side Height	Tailgate Height
DB0969514SS	890	96" x 111"	14"	21"
DB0961214SS	1,111	96" x 141"	14"	21"
DB0969520SS	955	96" x 111"	20"	27"

5-7 Yard Dump Body

Model	DuraMag Aluminum Weight (lbs)	Overall (W x L)	Side Height	Tailgate Height
DB0961220SS	1,193	96" x 141"	20"	27"
DB0961030SS	1,126	96" x 124"	30"	35"

All specifications subject to change without notice.

DuraMag® Van Bodies

DuraMag® Series Van Bodies

The DuraMag® series is designed primarily for Class 4 thru 7 chassis. DuraMag® offers lengths from 10'-26'. These premium van bodies will handle any amount of cargo that your truck is rated for.

The weight savings from engineered aluminum allows you to carry more cargo per load.

DuraMag® offers everything “cargo related” including: Scuff liners, E-track, all forms of cargo restraint, D-Rings, a variety of flooring options, rear door options, lift gates, walk ramps, side doors, attics, cargo racks, bumpers, and more.

DuraMag® builds in more features than any other manufacturer—100% pure high-strength aluminum; LED lights; bonded, rivetless side skins; 1/2” interior plywood; stainless steel fasteners on roll-up door—with the best warranty in the industry.

All this with a price that’s competitive with “standard steel models.”

DuraMag® Van Body Weights vs. Steel

DuraMag Van bodies are designed to be approximately 25% lighter and 15% stronger than the average steel version. Our goal has not been to create the lightest possible body, but to design a body that will never let you down.

Stronger than steel, lighter than steel and **WON'T RUST OUT!**

STANDARD FEATURES

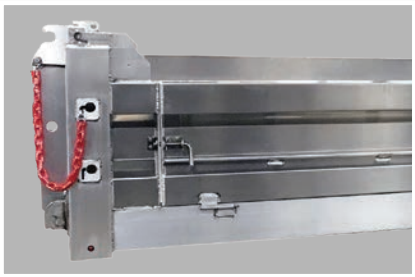
- Aluminum Box Tube Construction
- Heavy Duty Long Sills - 2"x 4" Aluminum Box Tube
- Cross Members (16" OC 10'-16') (12" OC 18'-26') 2"x 3" Aluminum Box Tube
- Long Sill Gussets Every 4' (Starting Front to Back)
- Box Tube Perimeter Frame 2"x 4" Aluminum Box Tube
- 1 1/8" Laminated Hardwood Flooring
- Cage Frame - 1 1/2" x 1 1/2" Aluminum Box Tube
- Anti-sag Crowned Roof Bows
- Aluminum Cast Corners (Roof)
- Aluminum Radius Vertical Front Corners and Front Roof for Aerodynamics
- Heavy Duty Rear Door Frame - 2" x 5" Aluminum Box Tube
- Smooth, Bonded (Rivetless) .040" Exterior Skins White Aluminum (Standard)
- One-piece .032" Aluminum Crowned Roof
- Premium Composite Roll-up Door with Stainless Fasteners
- 100% LED Lights - Wired Inside Box Tube
- LED Clearance and Marker Lights
- LED Interior Dome Light - Wired to One Switch
- 1/2" AC Plywood Interior Side Walls - 1/2" AC on Front Wall
- DOT ICC Bumper
- 2 Grab Handles on Rear Frame
- Aluminum Extruded Drip Rail (All Doors)
- Premium Color Matched, Rolled Front Roof Radius
- Made in the USA



Champion Hoists
Manufactured in USA



Manual Tarp



Drop Down Sides



Strobes
(Shown on Standard Cab Shield with
Optional Grab Handle)



Powder Coating Color Options



Fold-Up 2 Step Ladder



Coal Chute



Electric Tarp



Rear Light Bar
(Compatible with Under Tailgate Sand Spreader)

DuraLite Series Van Bodies

Light in Weight, Not in Performance

The primary difference between DuraLite and DuraMag: Flooring Weight. Laminated hardwood flooring is heavy (5 lbs per square foot) and decreases value in many applications. Over the last decade, DuraLite’s aluminum flooring has proven to be the best solution when weight is a factor—approximately **45% lighter than the steel comparable**—making it the ideal choice for all non-fork truck applications

While the DuraLite is most popular in Class 2, 3 & 4 truck chassis (10’-18’ models), it’s imperative for Class 2 vehicles—Ford Transit, Ram ProMaster and Mercedes Sprinter. In these low GVW trucks, heavy hardwood flooring or heavy steel bodies consume most of the available GVW. Additionally, it’s hard on the truck and hard on profits to carry all that weight.

Strong, lightweight aluminum bodies save on fuel, wasted time at DOT weigh stations and vehicle wear and tear. They’re engineered to be super strong yet light enough to deliver the highest payload in the market.

The DuraLite is ideal for navigating small city streets and tight parking. Curbside doors are a favorite choice for safe entry on busy streets. Typical uses include auto parts, parcel deliveries, office supplies, furniture, appliances, rent to own stores, and applications that require easy floor washing. In short, any application that doesn’t exceed the rated payload and doesn’t require a fork truck.

This series is designed for hand trucks (not fork truck applicable). The DuraLite walk ramp, with the widest useable width in the industry, is a popular option on the DuraLite.

DuraLite offers all the options that you’ll need: E-track, cargo restraint, D-Rings, rear door options, walk ramps, side doors, cargo racks, and more.

The DuraLite is designed with high-strength 6000 series aluminum. All models include LED lights, bonded, rivet-less side skins, 1/2” interior plywood all around, stainless steel fasteners on your roll-up door—all covered by the best warranty in the industry.

STANDARD FEATURES

- Aluminum Box Tube Construction
- Heavy Duty Long Sills - 2” x 4” Aluminum Box Tube
- Cross Members 2” x 3” Aluminum Box Tube (16” OC 10’-16’) (12” OC 18’)
- Long Sill Gussets Every 4’ (Starting Front to Back)
- Box Tube Perimeter Frame 2” x 4” Aluminum
- 6000 Series Extruded Aluminum Flooring - Tongue and Groove
- Cage Frame - 1 1/2” x 1 1/2” Aluminum Box Tube
- Anti-snap Crowned Roof Bows 1” x 1 1/2” - 16” OC
- Aluminum Cast Corners (Roof)
- Aluminum Radius Vertical Front Corners and Front Roof for Aerodynamics
- Heavy Duty Rear Door Frame - 2”x 5” Aluminum Box Tube
- Smooth, Bonded (Rivetless) .040” Exterior Skins White Aluminum (Standard)
- One-piece .032” Aluminum Crowned Roof
- Premium Composite Roll-Up Door with Stainless Fasteners
- 100% LED Lights - Wired Inside Box Tube



Shown with Optional Full Step Bumper

Standard Models: 10’-18’ (Custom Builds beyond 18’)

- LED Clearance and Marker Lights
- LED Interior Dome Light - Wired to One Switch
- 1/2” AC Plywood Interior Side Walls – 1/2” AC on Front Wall
- DOT ICC Bumper
- 2 Grab Handles on Rear Frame
- Aluminum Extruded Drip Rail (All Doors)
- Premium Color Matched, Rolled Front Roof Radius
- Made in the USA

DuraMag Series Van Bodies

For 102” wide, ADD 5” to “Clear Door Opening” width

Model	Nominal Length	DuraMag Aluminum Weight (lbs)	Competition Steel Weight (lbs)	% Lighter Than Steel	Overall Exterior Dimensions (W x L x H)	Clear Interior Dimensions (W x L x H)	Clear Rear Door Opening (W x H)
VBDM961085	10’	1451	1988	27%	96” x 126” x 85”	92” x 120” x 83.5”	86” x 77”
VBDM961091	10’	1503	2032	26%	96” x 126” x 91”	92” x 120” x 89.5”	86” x 83”
VBDM961285	12’	1606	2200	27%	96” x 150” x 85”	92” x 144” x 83.5”	86” x 77”
VBDM961291	12’	1662	2246	26%	96” x 150” x 91”	92” x 144” x 89.5”	86” x 83”
VBDM961485	14’	1768	2421	27%	96” x 174” x 85”	92” x 168” x 83.5”	86” x 77”
VBDM961491	14’	1828	2471	26%	96” x 174” x 91”	92” x 168” x 89.5”	86” x 83”
VBDM961685	16’	1927	2640	27%	96” x 198” x 85”	92” x 192” x 83.5”	86” x 77”
VBDM961691	16’	2000	2703	26%	96” x 198” x 91”	92” x 192” x 89.5”	86” x 83”
VBDM961697	16’	2071	2762	25%	96” x 198” x 97”	92” x 192” x 95.5”	86” x 89”
VBDM961885	18’	2132	2921	27%	96” x 222” x 85”	92” x 216” x 83.5”	86” x 77”
VBDM961891	18’	2206	2981	26%	96” x 222” x 91”	92” x 216” x 89.5”	86” x 83”
VBDM961897	18’	2299	3065	25%	96” x 222” x 97”	92” x 216” x 95.5”	86” x 89”
VBDM9618103	18’	2377	3127	24%	96” x 222” x 103”	92” x 216” x 101.5”	86” x 95”
VBDM962085	20’	2290	3137	27%	96” x 246” x 85”	92” x 240” x 83.5”	86” x 77”
VBDM962091	20’	2369	3201	26%	96” x 246” x 91”	92” x 240” x 89.5”	86” x 83”
VBDM962097	20’	2466	3378	25%	96” x 246” x 97”	92” x 240” x 95.5”	86” x 89”
VBDM9620103	20’	2549	3354	24%	96” x 246” x 103”	92” x 240” x 101.5”	86” x 95”
VBDM962285	22’	2466	3378	27%	96” x 270” x 85”	92” x 264” x 83.5”	86” x 77”
VBDM962291	22’	2551	3447	26%	96” x 270” x 91”	92” x 264” x 89.5”	86” x 83”
VBDM962297	22’	2654	3538	25%	96” x 270” x 97”	92” x 264” x 95.5”	86” x 89”
VBDM9622103	22’	2743	3610	24%	96” x 270” x 103”	92” x 264” x 101.5”	86” x 95”
VBDM962485	24’	2544	3484	27%	96” x 294” x 85”	92” x 288” x 83.5”	86” x 77”
VBDM962491	24’	2714	3668	26%	96” x 294” x 91”	92” x 288” x 89.5”	86” x 83”
VBDM962497	24’	2823	3764	25%	96” x 294” x 97”	92” x 288” x 95.5”	86” x 89”
VBDM9624103	24’	2918	3839	24%	96” x 294” x 103”	92” x 288” x 101.5”	86” x 95”
VBDM962685	26’	2801	3837	27%	96” x 318” x 85”	92” x 312” x 83.5”	86” x 77”
VBDM962691	26’	2897	3916	26%	96” x 318” x 91”	92” x 312” x 89.5”	86” x 83”
VBDM962697	26’	3011	4015	25%	96” x 318” x 97”	92” x 312” x 95.5”	86” x 89”
VBDM9626103	26’	3111	4094	24%	96” x 318” x 103”	92” x 312” x 101.5”	86” x 95”

DuraLite Series Van Bodies

For 90” wide, SUBTRACT 6” from “Clear Door Opening” width
For 102” wide, ADD 5” to “Clear Door Opening” width

Model	Nominal Length	DuraMag Aluminum Weight (lbs)	Competition Steel Weight (lbs)	% Lighter Than Steel	Overall Exterior Dimensions (W x L x H)	Clear Interior Dimensions (W x L x H)	Clear Rear Door Opening (W x H)
VBDL961079	10’	1085	1941	44%	96” x 126” x 79”	92” x 120” x 77.5”	86” x 71”
VBDL961085	10’	1139	1988	43%	96” x 126” x 85”	92” x 120” x 83.5”	86” x 77”
VBDL961091	10’	1191	2032	41%	96” x 126” x 91”	92” x 120” x 89.5”	86” x 83”
VBDL961279	12’	1167	2141	46%	96” x 150” x 79”	92” x 144” x 77.5”	86” x 71”
VBDL961285	12’	1231	2200	44%	96” x 150” x 85”	92” x 144” x 83.5”	86” x 77”
VBDL961291	12’	1287	2246	43%	96” x 150” x 91”	92” x 144” x 89.5”	86” x 83”
VBDL961479	14’	1267	2368	46%	96” x 174” x 79”	92” x 168” x 77.5”	86” x 71”
VBDL961485	14’	1330	2421	45%	96” x 174” x 85”	92” x 168” x 83.5”	86” x 77”
VBDL961491	14’	1391	2471	44%	96” x 174” x 91”	92” x 168” x 89.5”	86” x 83”
VBDL961679	16’	1359	2582	47%	96” x 198” x 79”	92” x 192” x 77.5”	86” x 71”
VBDL961685	16’	1427	2640	46%	96” x 198” x 85”	92” x 192” x 83.5”	86” x 77”
VBDL961691	16’	1500	2703	45%	96” x 198” x 91”	92” x 192” x 89.5”	86” x 83”
VBDL961697	16’	1571	2762	43%	96” x 198” x 97”	92” x 192” x 95.5”	86” x 89”
VBDL961879	18’	1484	2843	48%	96” x 222” x 79”	92” x 216” x 77.5”	86” x 71”
VBDL961885	18’	1570	2921	46%	96” x 222” x 85”	92” x 216” x 83.5”	86” x 77”
VBDL961891	18’	1644	2981	45%	96” x 222” x 91”	92” x 216” x 89.5”	86” x 83”
VBDL961897	18’	1737	3065	43%	96” x 222” x 97”	92” x 216” x 95.5”	86” x 89”
VBDL9618103	18’	1814	3127	42%	96” x 222” x 103”	92” x 216” x 101.5”	86” x 95”

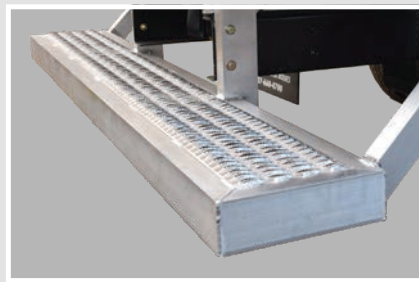
All specifications subject to change without notice.



E-Track



Lift Gate



Full Step Bumper - Grip Strut



Stirrup Step



Fold Down Steps



Swing (Barn) Doors



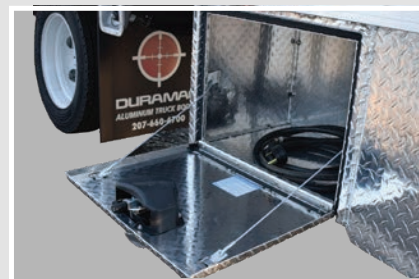
ICC Bumper



Chicago Style Bumper



Step Bumper with Receiver



Under Body Tool Box



Cab-over Attic



.040" Sheet Interior



4k SS Recessed D-Ring



Pull-out Walk Ramp - Recessed



Walk Ramp



Side Overhead Door (closed)



Side Overhead Door (open)



Rub Rail



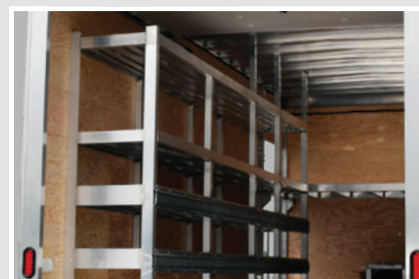
Translucent Roof



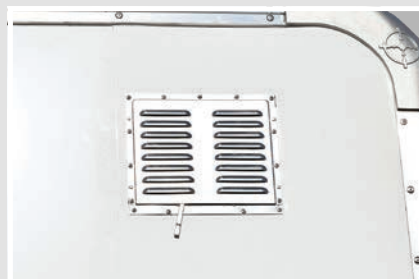
Apitong Slats



Apitong Scuff
(Scuff also available in Diamond Plate and HDPE)



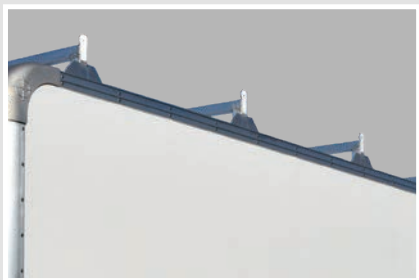
Custom Shelving



Wall Vents



Roll-up Side Door



Roof Ladder Racks



Side Access Door



Step Wall - 2 Step



Pipe Door



Rubber Bumpers

About DuraMag®

A Pure Aluminum Story

Since 1990, our management team has been continuously designing and building aluminum products, starting in the trailer industry and moving to truck equipment. This experience has been the base to rapidly grow F3 MFG (manufacturer of the DuraMag® brand). Our successful history has allowed us to attract extreme talent whose craftsmanship is top in the industry.

What Drives Us – A Market Revolution

For decades, the truck body industry has been plagued by boring, old school methods. There was nothing forcing improvements. Today all that is changing, and fast. There's an accelerating trend away from heavy, rusty steel to durable, rust-free aluminum. There are lots of converging forces that are making this impossible to reverse: Government fuel requirements, fuel savings, higher payloads, lower GVW trucks, and most importantly, a consumer that's becoming educated about aluminum.

The Consumer Benefits

We're excited to participate in this market redesign, forcing change in an old-school environment. Here's our formula:

- (1) Offer a product line so complete that no one has to buy a steel body: Dry Freight Van Bodies, Service Bodies, Platform, Landscape, Dump, Hauler, and Magnum Headache Racks.
- (2) Back that up with prices that are close to steel.
- (3) Provide peace of mind with the BEST Warranties in the Industry.

With a 10-year head start in aluminum bodies, we know that we build the finest aluminum bodies on the market. (There's a lot of runway between DuraMag® and second place.) We'll work hard to build the body that works best for you. And we'll do it with a passion for excellence - because ***"that's who we are."***

CONTACT US

📍 977 W. River Road, #3
Waterville, Maine 04901

DuraMagBodies.com

📞 (207) 660-4700

📠 (207) 660-4280

📘 fb.me/DuraMagTruckBodies

📷 @duramagbodies

DISTRIBUTED BY:



(207) 660-4700 | duramagbodies.com | [f](#) [@](#)



MADE IN THE USA 