



ALUMINUM BODIES FOR ALL APPLICATIONS. MADE IN THE USA.



HD FLATBED BODIES

DISTRIBUTED BY:

A Work-Horse Favorite.

The DuraMag® HD Series is strong enough to handle anything the truck is rated for and can be built to maximize your workday efficiency, with a straight truck or a dumping flatbed.

Designed for larger Class Trucks and Heavy Loads, the HD Series is now the best solution for lower GVW vehicles. These vehicles require aluminum bodies, as steel either consumes too much of the GVW or they're forced to be underbuilt to allow minimal payload.

STANDARD FEATURES

- All Aluminum 6000 Series
- Extruded Box Tubing
- Heavy Duty Long Sills and Rear Light Bar 2" x 5" 6000 Series
- Cross Members 12" OC 2" x 3" 6000 Series
- Premium G-Tube Perimeter Frame 6000 Series Aluminum
- Heavy Duty 1/2" Rub Rail & Stake Pockets (both side & rear)
- Heavy Rub Rail Reinforcement (between stake pockets)
- LED Lights Fully Pre-wired Inside Box Tube
- Extruded aluminum flooring 6000 Series (Tongue and Groove)
- Heavy Duty Extruded Aluminum Headboard with "below floor" gusset
- Choice of 16"x 32" expanded metal window OR headboard cross bars

OPTIONS



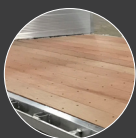
Cantilever Rack with PT Flooring



Cantilever Rack with Aluminum Flooring



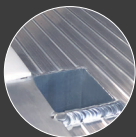
RG Prep



Apitong Flooring



40" Racks



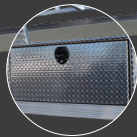
Inboard Stake Pockets



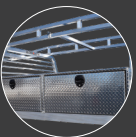
6" Oval Stop, Tail, Turn, Backup & Strobe Lights



Cast Aluminum License Plate Holder



Toolboxes: Underbody & Topside



Under Body Tie Rail



HD FLATBED

Model*	Deck (W x L)	DuraMag Aluminum Weight (lbs)	Competition Steel Weight (lbs)	% Lighter Than Steel
TB09510HD	95" x 124"	559	1,160	52%
TB09512HD	95" x 148"	653	1,395	53%
TB09514HD	95" x 172"	745	1,620	54%
TB09516HD	95" x 196"	838	1,850	55%
TB09518HD	95" x 220"	931	2,040	54%
TB09520HD	95" x 244"	1,025	2,235	54%
TB09522HD	95" x 268"	1,118	2,640	58%
TB09524HD	95" x 292"	1,211	2,690	55%

All specifications subject to change without notice.